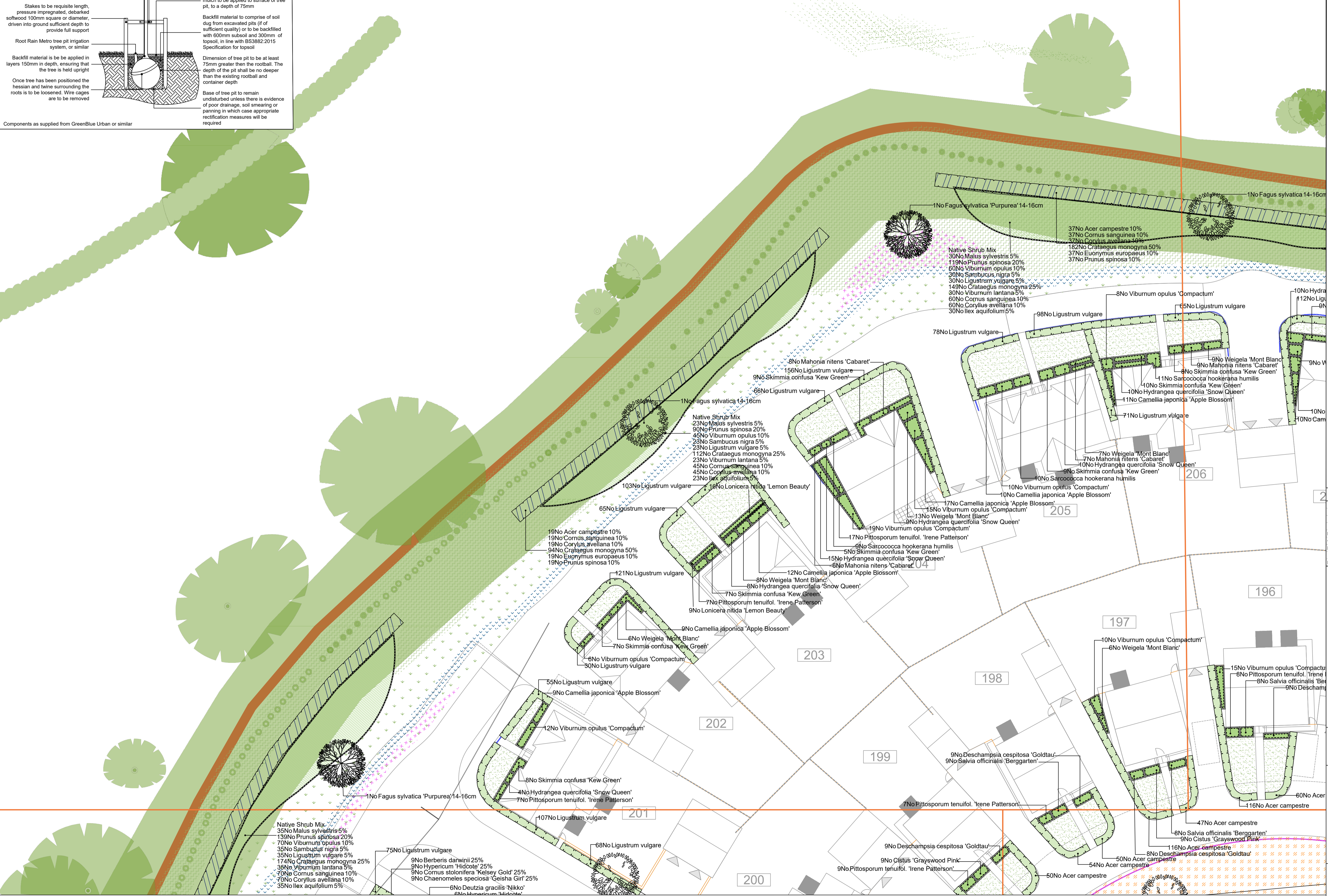


SPECIFICATION
All works generally, to comply with the written Soft Landscape Specification.

NOTES:
DO NOT SCALE FROM DRAWING
NOT FOR CONSTRUCTION, FOR PLANNING PURPOSES ONLY

- Legend**
- Existing trees to be retained and protected during construction
 - Proposed tree planting within soft landscape. See detail on sheet 1
 - Proposed specimen shrub planting to receive short angular staking on half standards with expandable tree ties. Irrigation tubing to root system specimens as required
 - Proposed hedge planting to be planted in a double staggered row 400mm apart and at 500mm centres in each row. To be maintained at 1m height
 - Proposed mixed native hedge planting to be planted in a double staggered row 500mm apart and at 500mm centres in each row. To be maintained at 1.8m height adjacent to site boundaries
 - Proposed shrub planting to receive 75mm bark mulch after planting operations
 - Proposed native mix shrub planting to be planted in groups of 5-7no. of each species
 - Proposed aquatic mix to be planted in groups of 5-7no. of each species
 - Proposed grass areas to receive good quality amenity grass turves laid in line with good horticultural practices
 - Proposed grassland areas, to be seeded with EM2 wildflower meadow grass seed mix as supplied by Emorsgate and sown at 4 grams per msq, or similar and approved
 - Proposed mown path, to be maintained in line with amenity grass areas
 - Proposed wet tolerant meadow, to be seeded with EM8 seed mix as supplied by Emorsgate Seeds and sown at 4 grams per msq, or similar and approved
 - Proposed permanently wet area within the pond
 - Proposed tussocky grass, to be seeded with EM10 seed mix as supplied by Emorsgate Seeds and sown at 4 grams per msq, or similar and approved
 - Proposed grass area, to be seeded with EFL1 Flowering lawn meadow mixture as supplied by Emorsgate Seed and sown at 4 grams per msq, or similar and approved
 - Existing ground to be left undisturbed, where disturbed seed with shade tolerant hedgerow mix ERI1 supplied by Emorsgate and sown at 4 grams per msq, or similar
 - Existing ground to be left undisturbed
 - Proposed bulb mix
 - Cut lines
- Planting schedule on sheet 8



Rev	Date	Details	Drawn
D	13.10.20	Revised layout	LS
C	28.09.20	Revised layout	LS
B	23.09.20	Revised layout	LS
A	01.06.20	Pond revised	LS



HEAD OFFICE
Rodbourne Rail Business Centre, Grange Lane,
Malmesbury, SN16 0ES
Tel: 01666 825646

Courtyard House, Mill Lane, Codrington, GU7 1EY
Tel: 01483 425714

Suite 6, Crescent House, Yonge Close, Eastleigh, SO50 9SX
Tel: 02382 026300

email: mail@acdenv.co.uk
www.acdenvironmental.co.uk

Persimmon Homes

scheme: Oakcroft Lane
Stubbington
client: Persimmon Homes
drawing: Landscape Proposals
date: April 2020
scale: 1:200@A1
drawing no: PERSC22805 11 Sheet 1
drawn: JM checked: DKM

Copyright of ACD Environmental Ltd. All rights described in Chapter IV of the Copyright, Designs and Patents Act 1988 have been generally asserted. 2011. Copyright of this plan remains with ACD until all fees have been paid in full.